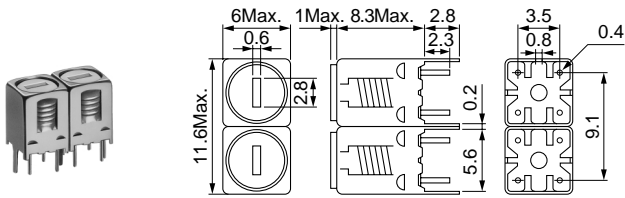


5HW Double Tuned 5HT Triple Tuned

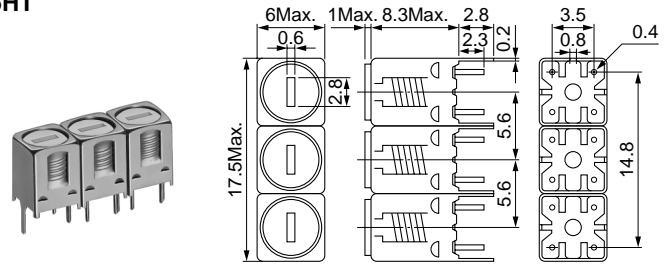
Frequency Range: 5HW, 5HT 350~1500MHz
5HRW, 5HRT 350-1500MHz

5HW



(Unit: mm)

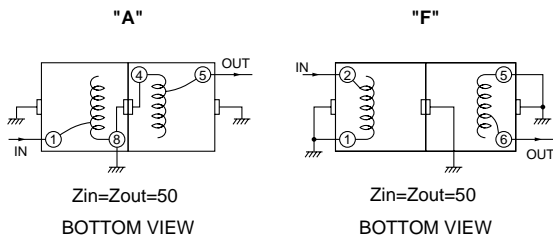
5HT



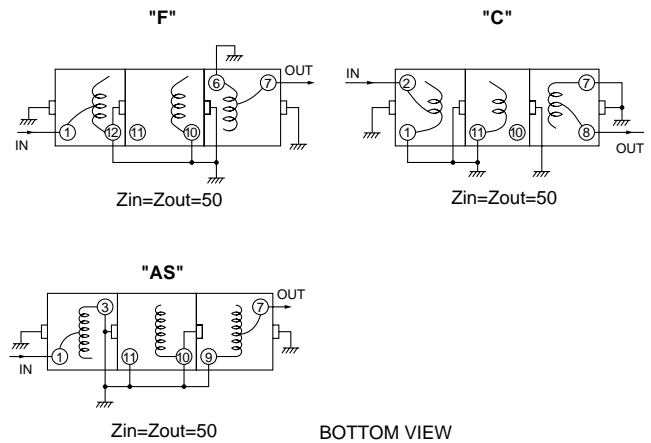
(Unit: mm)

Connections 接続図

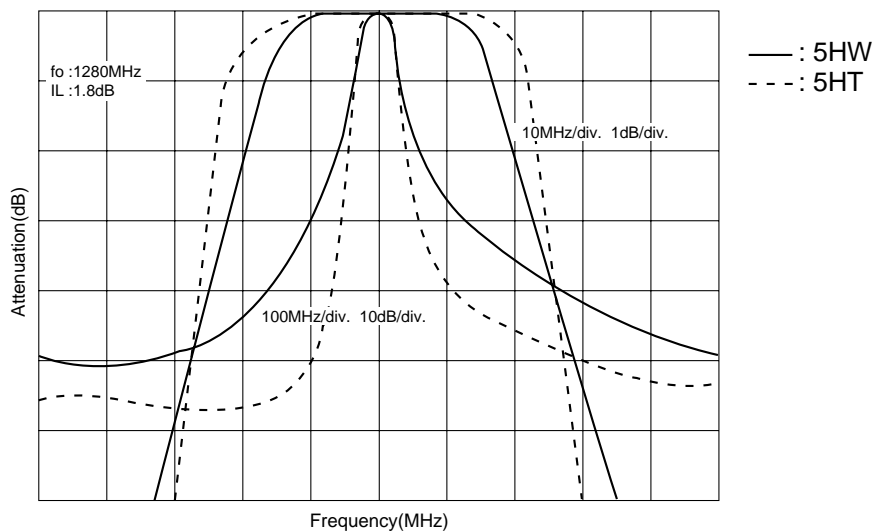
5HW



5HT



Typical characteristics 特性曲線



continued from previous page
前頁より続く

SELECTION GUIDE FOR STANDARD FILTERS

TYPE 5HW (Double tuned)

東光品番	中心周波数	帯域幅	選択度		リップル	挿入損失
TOKO Part Number	Center Frequency (MHz)	Bandwidth (-1dB) (MHz) Min.	Fo - ()MHz (dB) Min.	Fo + ()MHz (dB) Min.	Ripple (dB) Max.	Insertion Loss (dB) Max.
5HW-35045A-365	365	6.0	25(50)	20(50)	1.0	4.5
5HW-36535A-380	380	7.0	25(50)	20(50)	1.0	4.5
5HW-39545A-425	425	7.0	25(50)	20(50)	1.0	4.5
5HW-40545A-430	430	7.0	25(50)	20(50)	1.0	4.5
5HW-44545A-475	475	8.0	22(50)	18(50)	1.0	4.5
5HW-47535A-505	505	10.0	20(50)	16(50)	1.0	4.5
5HW-51035A-530	530	10.0	20(50)	16(50)	1.0	4.5
5HW-52535A-545	545	10.0	20(50)	16(50)	1.0	4.5
5HW-58080A-625	625	10.0	18(50)	15(50)	1.0	4.5
5HW-65535A-670	670	14.0	26(100)	23(100)	1.0	3.5
5HW-94555A-959	959	18.0	20(100)	17(100)	1.0	3.5
5HW-100090A-1010	1010	16.0	18(100)	14(100)	1.0	3.5
5HW-109060A-1130	1130	18.0	16(100)	14(100)	1.0	3.5
5HW-115045F-1195	1195	24.0	20(100)	18(100)	1.0	3.5
5HW-120050F-1225	1225	18.0	24(100)	20(100)	1.0	3.5
5HW-125055F-1305	1305	25.0	20(100)	18(100)	1.0	3.5

TYPE 5HT (Triple tuned)

東光品番	中心周波数	帯域幅	選択度		リップル	挿入損失
TOKO Part Number	Center Frequency (MHz)	Bandwidth (-1dB) (MHz) Min.	Fo - 50MHz (dB) Min.	Fo + 50MHz (dB) Min.	Ripple (dB) Max.	Insertion Loss (dB) Max.
5HT-36020AS-360	360	16.0	33	25	1.0	4.0
5HT-38020AS-380	380	16.0	28	24	1.0	4.0
5HT-40020AS-400	400	11.0	34	31	1.0	4.0
5HT-42020AS-420	420	13.0	32	27	1.0	4.0
5HT-44020AS-440	440	14.0	28	25	1.0	4.0
5HT-46020AS-460	460	14.0	28	23	1.0	4.0
5HT-48030AS-480	480	14.0	26	22	1.0	4.0
5HT-49520AS-495	495	15.0	26	22	1.0	4.0
5HT-51535AS-515	515	16.0	25	20	1.0	4.0
5HT-52070AS-520	520	9.0	25	22	1.0	4.0
5HT-59065F-590	590	12.0	34	25	1.0	4.5
5HT-63540F-635	635	12.0	30	26	1.0	4.0
5HT-65550F-655	655	12.0	30	26	1.0	4.0
5HT-70530F-705	705	15.0	30	26	1.0	4.0
5HT-73565F-735	735	15.0	28	24	1.0	4.0
5HT-80030F-800	800	15.0	28	24	1.0	4.0
5HT-83050F-830	830	15.0	26	22	1.0	4.0
5HT-88065F-880	880	15.0	24	20	1.0	4.0
5HT-94535F-945	945	15.0	22	18	1.0	4.0
5HT-98030F-980	980	15.0	22	18	1.0	4.0
5HT-101045F-1010	1010	15.0	18	14	1.0	4.0
5HT-105535F-1055	1055	15.0	18	14	1.0	4.0
5HT-109065F-1090	1090	15.0	17	15	1.0	4.0
5HT-112570C-1125	1125	15.0	20	18	1.0	4.5
5HT-123080C-1230	1230	15.0	20	16	1.0	4.5

• How to read TOKO Component Numbers (5HW/5HT/7HW/7HT)

Example:

5HW-350 45A-365

② Lowest usable frequency

③ Usable frequency range

④ Adjustable frequency

*Maximum usable frequency is

⑤+⑥=350+45=395MHz

• 東光品番の読み方 (5HW / 5HT / 7HW / 7HT)

(例)

5HW-350 45A-365

② : 使用可能な最小周波数

③ : 使用周波数可能範囲

④ : 調整周波数

*最大使用可能周波数は、

⑤+⑥となる

350+45=395MHz